



Clara B. Rees Iris Society - Fleur de Lis

Dec 2011

Vol 55, Issue 3

Meeting Place

**First Baptist Church
17765 Daves Avenue
Los Gatos, CA 95030**

Next Meeting

Christmas Party

Friday Dec. 2, 2011

6:30 P.M.

Dinner at 7:00 P.M.

Doors open at 5:30 P.M.



Club Membership Dues

**Sep 1, 2011—
Aug 31, 2012**

Adults \$12.00

No charge for children
age 18 and under

CBRIS CHRISTMAS PARTY

The Clara B. Rees Iris Society will hold its annual Christmas party on Friday, Dec 2nd. The decorating committee will meet at 5:30 PM in order to set up the tables and decorate. There will be a tree to decorate using the decorations that the church provides. People may bring their hot dishes at 6:30 P.M. to 6:45 P.M. We will dine promptly at 7:00 P.M. otherwise the evening celebration will last too late. We will have the door prize drawing and a very short business meeting before the gift exchange.

If you haven't signed up to bring a food dish to share, please send Carolyn Craft an e-mail at theladygardens@aol.com or leave a phone message at 408-266-0945 to let her know what type of dish you are bringing. We are looking for another green salad. The turkey and ham are provided. Please bring your own plates, cups, utensils and drinks. With respect to the church, please do not bring alcohol.

Members who wish to participate in the gift exchange need to bring a wrapped gift valued around \$15. Over the years this gift exchange has slowly evolved from a "white elephant" theme to an "iris or garden" theme. Just remember the gift **is** something that you would want to take home? The game rules are as follows. The first person whose name is drawn will choose a wrapped gift and must open it before the group. They may sit down with their gift. Each person whose name is drawn may choose a new wrapped gift or steal an opened gift from someone else. Each new gift must be opened and shown to the group. Each gift may only be stolen twice. The third owner gets to keep the gift. You may not leave with your gift until it is frozen or if the remaining participants agree they do not want to steal it when their turn comes up. If you need to leave early you must relinquish the gift if the game is still going on and someone would like to steal your gift.

If you bring a guest, a small donation to the club would be appreciated to cover expenses. Come prepared for a fun meeting and party. Usually this event ends on the late side. Please plan on staying a little while after the party in order to help clean and set the church hall back in proper order.

Merry Christmas



Lisa Ayala and Henry Rojas



Jim and Elaine Laflin



Valda Evans



Mary Lou Wyman



John Stremel and Garry Knipe



Sara Langton

November Meeting

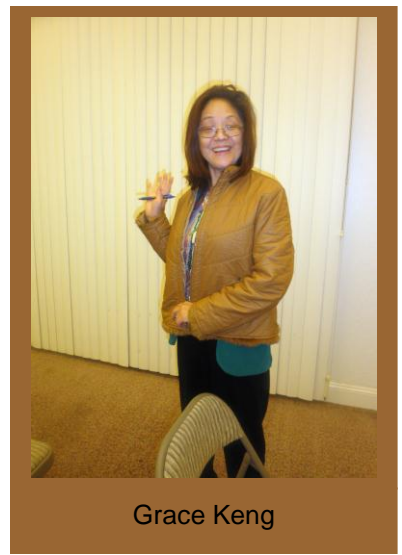




Helen Bliven



Garry Knipe



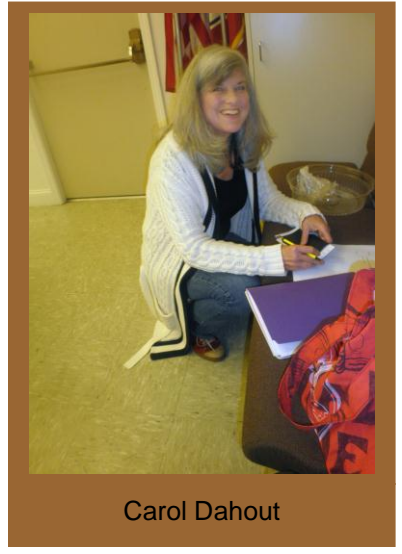
Grace Keng



Alice Clark



Debi Dudley and Jane Reiter



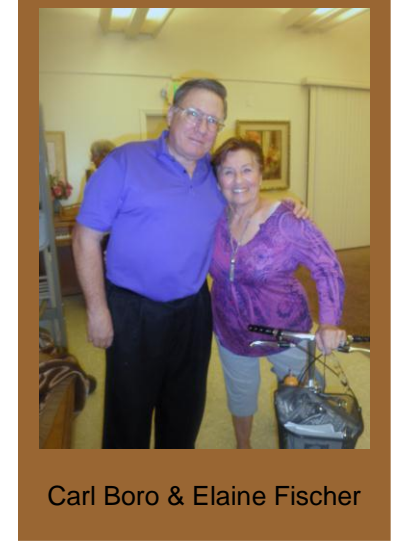
Carol Dahout



John Pesek



Mary Collins



Carl Boro & Elaine Fischer



November Meeting

Did you miss last month's meeting? If so, you missed a great opportunity to learn more about Pacific Coast irises. Our speaker was Joe Ghio, an honorary CBRIS member and a well-known hybridizer from the Monterey Bay Iris Society. As you probably know, he is the owner of Bay View Iris Garden in Santa Cruz. This man knows everything that there is to know about PCIs! Joe gave his tips on their culture and gave a demonstration of how best to divide them.. Yes, you can grow them, too!



Henry Rojas, Chris Dickinson and Jane Jordan



Joe Ghio

Spring Show

We are still taking suggestions for naming our Spring Show. If you have a suggestion, submit it to Carol Dahout soon. We will be voting on all the submitted names.

Name me

Name me!

Name me!!

Treasurer's Report

Beginning balance November 1, 2011	\$12,681.96
Affiliation fee	(25.00)
Yearbook printing	(25.00)
Raffle	34.00
Dues	<u>72.00</u>
Ending balance	\$12,737.96

-Carol Dahout, CBRIS Treasurer



November 4, 2011

Minutes of the Clara B. Rees Iris Society's general meeting

President Mary Collins opened the meeting at 7:45 p. m. She announced that the business part of the meeting would occur after announcements.

The Christmas party will be on the next meeting date on December 2, 2011. A signup sheet for menu items and Christmas tree purchaser was passed around.

Birthdays for the month were announced and Carol Dahout, Mary Collins, Mikey Lango, and Lynn Stuart were thanked for bringing the monthly treats.

Joe Ghio, our honored guest speaker and renowned hybridizer, spoke about how he began hybridizing Pacific Coast Iris and how to divide, plant, and nurture them. He brought samples for his demonstrations and gave planting tips. Joe provided some of his own hybrids for the door prize iris drawing.

Mary suggested that members send greeting cards to Dorothy Goble who is in hospice care.

Mary opened the business meeting by greeting guests and new members John and Debi Dudley. Debi shared about her interest in irises.

Under old business, Mary gave a synopsis about the Fall Regional, which was well attended by CBRIS members. She announced that Linda Stremel and Barbara Pesek are now judges and that the new Region 14 Bulletin is available on the Region's website. Carol Dahout is Region 14's newest director and will serve for three years. The American Iris Society now has e-memberships for \$15.00.

Under new business, Carol Dahout, co-chair for the Spring Show (April 14 and 15, 2012) announced that she is signing up three judges for the show. Starting in January, per Region 14 rules, she can obtain three more judges. She also asked for suggestions for a name for the show. Those offered include Iris Impression, Iris ala Van Gogh, Van Gogh's Iris, Paint by Iris, and Iris Illusions.

After the raffle for iris and gardening related items and the door prize iris drawing, the meeting was adjourned at 9:30 p.m.

Respectfully Submitted,

Barbara Pesek

Secretary

SECRETARY



Thank You

I wish to thank all the club members for the kind words and comforting support during the recent loss of my sister. I thank each and every one of you! You have made it a bit easier for me.

–Mikey Lango

Getting Better

Jack Alvis has been in and out of the hospital quite a bit lately. As of now, he is home and getting a bit healthier every day. Feel free to remind him that he is to take it a bit easier for a while and listen to Philippa and of course, to his doctor! We are happy that you are getting well, Jack!

Culture

Watch for late rebloomer stalks and protect them from snails. Most of all types of iris should be dormant. Cleanup any old, dead leaves. Avoid excess moisture caused by winter rains and poor drainage, which can lead to rot.

–Chad Scroter

Mending

Elaine Fischer now has the cast off her foot after six long weeks. She is doing very nicely but needs to be reminded to take it easy! You can now reach her at home.

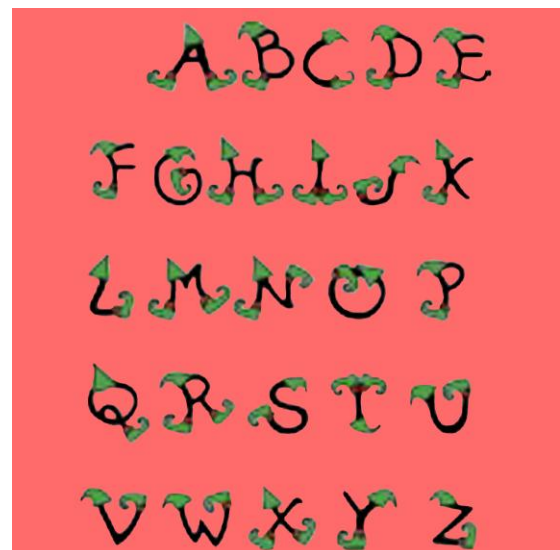
What do elves learn in school?

The Elf-abet!

Santa Claus: What's that terrible racket outside?

Mrs. Claus: It's rain, deer.

www.dezert-rose.com
www.squiglyplayhouse.com
www.christmastimeclipart.com
www.clipartof.com



DECEMBER 2011/ APRIL 2012

- △ **Bottle Rocket** (M. Sutton 10) 35", E-M & re. S. orange; F. ruby red veined orange with 1/4"orange rim. Carrot orange beards. 7 to 9 buds.
- △ **Candy Store** (Black 11) 33", M-L. S. coral; F. darker coral with hafts brushed gold. Big, bold red orange beards. Shorter stalks have 2-3 branches and 8-9 buds.
- △ **Cause for Celebration** (Kerr 11) 38", M-L. S. white with slight hint of pink; F. white with yellow hafts, fall edges can have 1 to 3 bands of blue—the outer band medium blue, inner band light blue; beards white tipped red orange.
- △ **Cold Fusion** (M. Sutton 11) 33", M-L & re. S. white; F. white ground with heavy mottling and veining of blue . Yellow beards, 7 buds, wonderful size and ruffling.
- △ **Dark Matter** (Keppel 11) **SDB**, 11", M-L. S. purplish black; F. purplish black. Purplish beards are tipped blackish brown at the end.
- △ **Edge of the World** (M. Sutton 11) 32", M-L & re. S. blue violet edged brown with gold dusting; F. Near black. Brick orange beards. Fall rebloom has 9 buds while spring bloom has 7 to 9.
- △ **Enjoyment** (Ghio 11) 37", L. S. pastel alabaster pink; F. slightly lighter. Show branching, bubble ruffling, blue beards to light tangerine in the heart.
- △ **Inkination** (J. Painter 11) 35", M-L. S. almost solid purple except midrib area; F. white with dark 1/2" purple edges. White tipped purple beards. 7-9 buds, sweet spicy fragrance. Sharp contrasted white and purple plicata.
- △ **Mimosa** (M. Sutton 11) 36", E-M. S. orient pink with orange veins and edges; F. orange white veined orange with a darker orange rim; B. bright tangerine. 9 buds, occasional rebloom.
- △ **Pageant's Gown** (L. Painter 10) 36", M & re. S. lavender violet; F. bishop's violet. Laced.
- △ **Peach Frappuccino** (G. Sutton 10) **SDB**. Orange apricot self.
- △ **Pink Delicacy** (Lauer 11) 32", M-L. S. peach; F. cream to white, peach rim with carrot red shoulders; B. orange. Ruffled and laced, pronounced sweet fragrance. 7+ buds.
- △ **Plot Line** (Ghio 11) 38", E-M. S. blue with a wide gold halo; F. mahogany maroon. Pleated ruffles, gold beards, show branching, 10 + buds. On Ghio catalog cover.
- △ **Pretty Kitty** (Keppel 11) 34", VL. S. heavily fluted and ruffled peach pink; F. same, paling toward the center; B. coral pink on end, red at throat. Well branched.
- △ **Rainbow Shadows** (Kerr 11) 38", E-M. S. straw yellow overlaid with red violet; F. light taupe with yellow edge and blue violet blaze. B. antique gold. Terrific branching and bud count.
- △ **Rasputin** (T. Johnson 11) 34", M. S. apricot peach; F. claret banded rosy mauve; B. tangerine. Large flowers, well branched stalks, excellent increase, instant clumps.
- △ **Spectacle** (Ghio 11) 38", E-M. S. orange; F. black maroon with orange wire edge; B. orange. Bubble ruffling and wide branching, huge blossoms.
- △ **Sun Chic** (L. Painter 11) 37", M-L. S. lemon yellow veined with darker yellow; F. bright yellow with a few white dots at gold beards. Spicy fragrance, 7 buds.
- △ **Toast of the Town** (Black 11) 35", L-VL. S. lavender; F. white with texture veins; B. white with tangerine tipped throats. Heavily ruffled and laced.

